



MODULE 4 - LESSON 4.5

SCOTT DEVINE

SOLOING OVER ONE MULTIPLE CHORDS

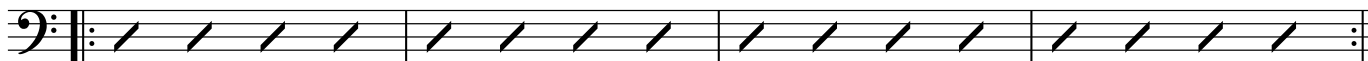
I VI II V CHORD PROGRESSION

C^{maj7}

A⁷

D^{m7}

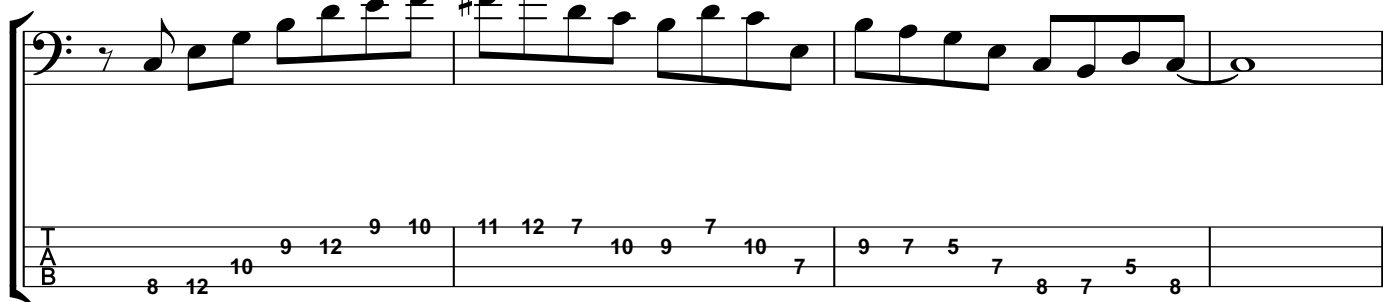
G⁷



13:31

PHRASE 1

C



23:08

EXAMPLE CHORD PROGRESSION NOT IN ONE KEY.

The key of C major

C

A^m

The key of B^b major

B^b ^{maj7}

E^b ^{maj7}

